



S//NCTU//RY POINT PS

'Together We Succeed'

14th February—Term 1 Week 3 2018

WALAWAANI NJINDIWAAN (Welcome everyone)

More Happy Faces



PRINCIPAL REPORT



WHAT I LOVED ABOUT THIS WEEK

Having the chance to get around and visit lots of classrooms this week I was excited to see lots of happy children, doing great work, and settling in well into their classes. I also saw lots of smiling teachers who are doing a great job getting to know their students. For our new parents to the school who may not know who I am, I have included a picture, be sure to say hello when you see me.

STUDENTS ARRIVING EARLY TO SCHOOL

I just wanted to make parents aware that students are not required to be at school until 8.45. This is when teachers are officially on duty and we have supervision in the playground. If your child is arriving at school before this time they are required to sit in the cola, until the teacher arrives for duty. It can sometimes be a very long time for students to sit waiting when they arrive between 8 – 8.15am. If you are a parent who needs to leave early for work, the school has before and after school care running within our school each morning; this may be a service you wish to access. I know that all the students who attend have a great time and experience a great start to their school day.

SUN SAFETY

During the hot summer months of term 1 and 4 we want to ensure that our students are sun safe. This means that children should be wearing a school hat at recess and lunch time. Please ensure that your child has a **LABELLED** school hat with them every day. Students are required to have a school hat with them if they attend any excursions outside of school, including school camp. School hats can be purchased from the uniform shop or the school's front office. Your assistance in this matter is greatly appreciated

SCHOOL CAMP

School camps for years 3-6 are fast approaching, please be aware of the due dates for the return of notes and money, **as they will be strictly adhered to**. If you are experiencing any issues with payment, etc. please talk to your child's class teacher before the due date.

MEET AND GREET

I'm looking forward to next week, hopefully seeing lots of parents visiting the school to meet their child's class teacher to discuss their learning goals for the semester. I know the teachers really appreciate being able to meet parents and develop a great connection between home and school. The more a teacher knows about your child the better they are able to meet their learning needs.

Belinda Doyle (Relieving Principal)

WORDS OF THE WEEK

The beautiful thing about education is that no one can take it away from you.

Office News

Dates to Remember

16th District Soccer

23rd District Swim

28th 4/5/6 CAMP

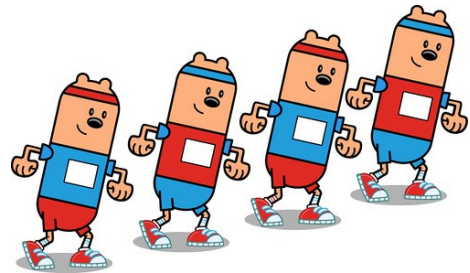
Sports Teams

Wattle-Bidhudhu 178

Geebung-Babadhal 189

Appleberry-Wandaama 176

Lilly Pilly-Galamgara 149



Year 2-4 Consent Forms

All Year 2-4 students will be bringing home a consent form to participate in a research project conducted by the Australian Catholic University and the Department of Education. The project aims to identify the key driver and barriers of educational success for BOTH Aboriginal and non-Aboriginal students.

All consent forms need to be returned by the end of Week 3 (16/01/2018).

Derek Hauwert
Assistant Principal

Camp Notes

This is a reminder that all camp notes and money are due back next Tuesday the 20th of February. To ensure your child does not miss out on this extremely valuable experience please ensure you have your completed notes and payments in before this date. **No late payments will be accepted.**

Scott King
Assistant Principal

Zone Swimming Trials

Thank you to all students who participated in the Zone Swimming Trials at the Bay and Basin Leisure Centre on Monday 12/2/18. All students gave it their absolute all, with many competing in every single event. Thank you to all the parent/ carers who came along to help and support their children. The Zone Swimming Carnival will be held in Bomaderry on Friday 23/2/18.



Coles Sport for School

Coles Sport for Schools is up and running. Please remember to collect your vouchers and place them into the box in our office. For ever \$10 spent you will receive a ticket which will go towards purchasing new sporting equipment. Thank you for your support.

Kinder Uniforms

A reminder if you paid for Kindergarten uniforms at the end of last year, they are in the front office. Please come and pick them up. We still have a large number of them.



NOWRA

PRINCES HIGHWAY
Next to Stockland Shops
22nd Feb - 4th Mar

WILD WEST

featuring
Wheel of Death,
Trapeze, Miniature
Horses, Dogs & Clowns
plus exciting circus
acts. Boot scooting
whip cracking fun and
laughter for all ages.

SHOW TIMES		
Thurs	22nd Feb	7.00pm
Fri	23rd Feb	7.00pm
Sat	24th Feb	3.00pm & 7.00pm
Sun	25th Feb	11.00am & 3.00pm
Thurs	1st Mar	7.00pm
Fri	2nd Mar	7.00pm
Sat	3rd Mar	3.00pm & 7.00pm
Sun	4th Mar	11.00am Last Show

TICKET PRICES	
B Reserve Chairs	
Child	\$18.00
Adult	\$28.00
A Reserve Chairs	
Child	\$20.00
Adult	\$30.00
Ring Side Chairs	
Child	\$25.00
Adult	\$35.00
VIP Chairs	
Child	\$32.00
Adult	\$42.00

- Tickets on sale 1 hour before each show.
- Cash sales only, no cheques or credit cards.
- On site box office open 10am - 5pm Wed to Sun.
- All children pay ages 3-14 and to be accompanied by an adult

Online Bookings: www.weberscircus.com
Phone Bookings: 9.00am - 7.30pm

FOR ALL ENQUIRIES
0448 247 287
0448 CIRCUS

To Redeem this \$2 Discount flyer must be presented at on-site ticket office to be deducted off cash sale.

ONE PER TICKET, MAXIMUM OF 5 PER TRANSACTION

Present this leaflet to receive \$2 Discount!
Not to be used with any other discount
www.weberscircus.com



WILD WEST WEBERS CIRCUS

TRICK PONIES ★ ACROBATS
FUN CLOWNS ★ WHEEL OF DEATH
HULA HOOPS ★ RUSSIAN SWING
PLUS MUCH MORE FUN FOR ALL THE FAMILY

Our school has a commitment to supporting our student's academically, socially and emotionally. We are proud to be a KidsMatter school and as part of this initiative all classes will be teaching the Bounce Back program. This term each class is focusing on core values.

To begin the year Kinder we will focus on what a bucket dipper and a bucket filler are then go onto our 'Core Values' unit.

'How full is your bucket?' and 'Have you filled a bucket today?' are worthwhile clips that support the same message.

Values are easy to say, but often hard to do. Learning values is important as they define us. A value is something you believe in and is something that people feel is important to do.

The key values that we will be focusing on are honesty, being fair, acting responsibly, caring about and supporting others to be kind, cooperating, being friendly, showing respect to others and respecting ourselves and that its okay to be different. As I said before these values are often hard to do especially for young students in a support class but nevertheless learning to understand values is an important life skill.

Ask your child what activities they've been doing in class to support our Bounce Back program.

Have You Filled a Bucket Today?





5-10 year olds Classes

FUN - FITNESS - DANCE - FRIENDSHIPS



Classes start on Thursday 15th Feb '18
at Vincentia Primary School

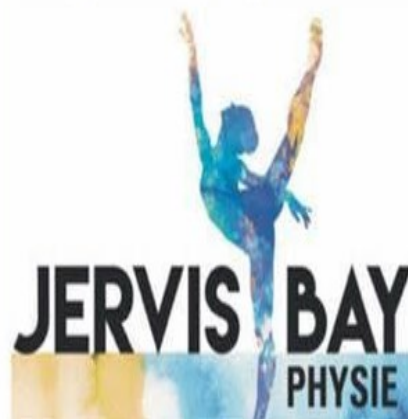
5 & 6 years class: 4:30pm to 5:15pm

7 & 8 years class: 5:15pm to 6:00pm

9 & 10 years class: 6:00pm to 7:00pm



www.jervisbayphysie.com.au





FREE BMX BIKE WORKSHOPS

11am – 12noon

April	Skate Park
Monday 16	Shoalhaven Heads
Tuesday 17	Nowra
Wednesday 18	Culburra
Thursday 19	Sanctuary Point
Friday 20	Ulladulla

Come & Learn new tricks – For young people aged 8-18yrs

- Children under 12yrs must be accompanied by an adult
- Helmets and covered shoes are essential
- To participate please bring signed forms - download and visit shoalhaven.nsw.gov.au/My-Community/Community-Services/Youth-services/Youth-Week.
- Limited places - Book now on 4429 3418
- FREE Healthy lunch & drink provided



Partners: Crossroads Youth Health, Nowra headspace, Grand Pacific Health PCYC Nowra & Bay & Basin Community Resources.

For more information contact
Shoalhaven City Council's
Community Development Department
4429 3418 | Council@shoalhaven.nsw.gov.au

CS14-01-01

Advisory Committee PCYC Shoalhaven

We are seeking advisory members to help our club grow & change in 2018.

We are looking for Youth & Adult members!

Youth - 12 to 24 yrs

Adult - 24 yrs +

From all walks of life

What would your responsibilities be?:

Assist PCYC Shoalhaven to raise funds for local young people & programs plus be our eyes & ears in the community.

Also have a say in what happens in your local club!

When is it?

2nd Monday of every month

6pm-7pm

PCYC Shoalhaven 72 Park Road, Nowra

Join today & have your say!

PCYC Shoalhaven

Safer Driver Course

**Tick off 20 log book hours while
learning some valuable &
potentially life saving skills.**

**\$140 or \$0 if on
centrelink concession**

2018 Dates:
17th Feb
17th March
14th April
19th May
16th June

Course is a total of 5
hours with both
sections done on the
same day.
Must be under 25yrs

Just go to
[www.saferdrivers
.org.au](http://www.saferdrivers.org.au)
to book your
spot!